

# SI-306 LEDZOOM 1925F



**ADD** 3rd Floor, No. 288, Guangzhu East Line, Pingwen, Lanhe Town, Nansha District,  
Guangzhou, China  
**Tel.** +86 20 8499 2310/2320/2330  
**Fax** +86 20 8499 2360  
**E-mail** info@color-imagination.com  
**Website** www.color-imagination.com

**Follow  
us on**



[www.facebook.com/color.imagination.1](http://www.facebook.com/color.imagination.1)



[www.youtube.com/user/colorimaginationj](http://www.youtube.com/user/colorimaginationj)



[https://twitter.com/Color\\_lighting](https://twitter.com/Color_lighting)

CE   IP20 t<sub>a</sub>40°C t<sub>c</sub>150°C

# User Manual

KEEP THIS MANUAL FOR FUTURE NEEDS

# 1 SAFETY INSTRUCTIONS



## CAUTION

Becareful with your operations. With a dangerous voltage you can suffer a dangerous electric shock when touching wires!

This device has left the factory in perfect condition. In order to maintain this condition and to ensure a safe operation, it is absolutely necessary for the user to follow the safety instructions and warning notes written in this user manual.



## IMPORTANT

Damages caused by the disregard of this user manual are not subject to warranty. The dealer will not accept liability for any resulting defects or problems.

If the device has been exposed to temperature changes due to environmental changes, do not switch it on immediately. The arising condensation could damage the device. Leave the device switched off until it has reached room temperature.

This device falls under protection-class I. Therefore it is essential that the device be earthed.

The electric connection must carry out by qualified person.

The device shall only be used with rate voltage and frequency.

Make sure that the available voltage is not higher than stated at the end of this manual.

Make sure the power cord is never crimped or damaged by sharp edges. If this would be the case, replacement of the cable must be done by an authorized dealer.

Always disconnect from the mains, when the device is not in use or before cleaning it. Only handle the power cord by the plug. Never pull out the plug by tugging the power cord.

During initial start-up some smoke or smell may arise. This is a normal process and does not necessarily mean that the device is defective, it should decrease gradually.

Please don't project the beam onto combustible substances.

Fixtures cannot be installed on combustible substances, keep more than 50cm distance with wall for smooth air flow, so there should be no shelter for fans and ventilation for heat radiation.

If the external flexible cable or cord of this luminaire is damaged, it shall be exclusively replaced by the manufacturer or his service agent or a similar qualified person in order to avoid a hazard.

# 9 MAINTENANCE AND CLEANING

The following points have to be considered during the inspection:

- 1) All screws for installing the devices or parts of the device have to be tightly connected and must not be corroded.
- 2) There must not be any deformations on the housing, color lenses, fixations and installation spots (ceiling, suspension, trussing).
- 3) Mechanically moved parts must not show any traces of wearing and must not rotate with unbalances.
- 4) The electric power supply cables must not show any damage, material fatigue or sediments.

Further instructions depending on the installation spot and usage have to be adhered to by a skilled installer and any safety problems have to be removed.



## CAUTION

Disconnect from mains before starting maintenance operation.



In order to make the lights in good condition and extend the life time, we suggest a regular cleaning to the lights.

- 1) Clean the inside and outside lens each week to avoid the weakness of the lights due to accumulation of dust.
- 2) Clean the fan each week.
- 3) A detailed electric check by approved electrical engineer each three month, make sure that the circuit contacts are in good condition, prevent the poor contact of circuit from overheating.

We recommend a frequent cleaning of the device. Please use a moist, lint-free cloth. Never use alcohol or solvents.

There are no serviceable parts inside the device. Please refer to the instructions under "Installation instructions".

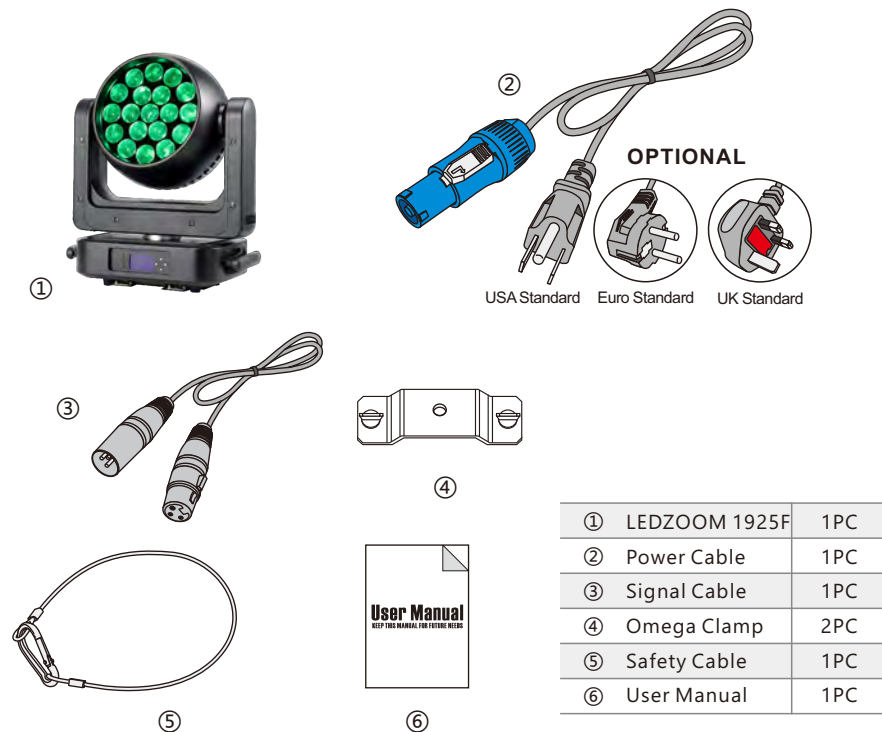
Should you need any spare parts, please order genuine parts from your local dealer.

## 2 UNPACKING

Thank you for choosing our LEDZOOM 1925F. For your own safety, please read this manual before installing the device. This manual covers the important information on installation and applications. Please install and operate the fixture with following instructions. Meanwhile, please keep this manual well for future needs.

The LEDZOOM 1925F is made of a new type of high temperature strength of engineering plastics and cast aluminum casing with nice outlook. The fixture is designed and manufactured strictly following CE standards, complying with international standard DMX512 protocol. It's available independently controlled and linkable with each other for operation. And it is applicable for large-scale live performances, theater, studio, nightclubs and discos.

The LEDZOOM 1925F 37 × 25W Prolight LED lamp 4-in-1 RGBW. Please carefully unpack it when you receive the fixture and check whether it is damaged during the transportation. And please check whether the following items are included inside the box:



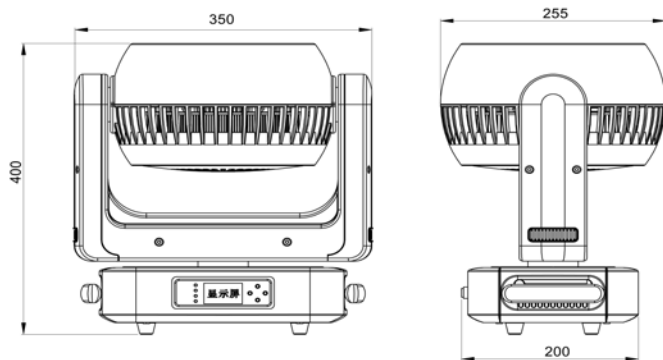
### 3 FEATURES & SPECIFICATIONS

#### Features

- 19\*25W 4-IN -1 RGBW LED Lamp
- 50000 hours rated lamp source
- Extremely small, fast and powerful LED moving beam.
- DMX Channels: 19/36 channels mode
- Outstanding color macro effect
- Variable strobe effects
- Blue white LCD display for easy navigation

#### Specifications

- Input Voltage:** AC100-240V 50/60Hz
- LED Quantities:** 19\*25 RGBW LED Lamp
- Control Signal:** DMX512, master-slave and sound activated or auto operation
- Control Channel:** 19/36 DMX channels USITT DMX-512
- Power Consumption:** 500W
- Dimensions:** 255(D)\*350(W)\*400(H)mm
- Packing Dimensions:** 265(D)\*470(W)\*565(H)mm
- Net Weight:** 9.5kg
- Gross Weight:** 11kg



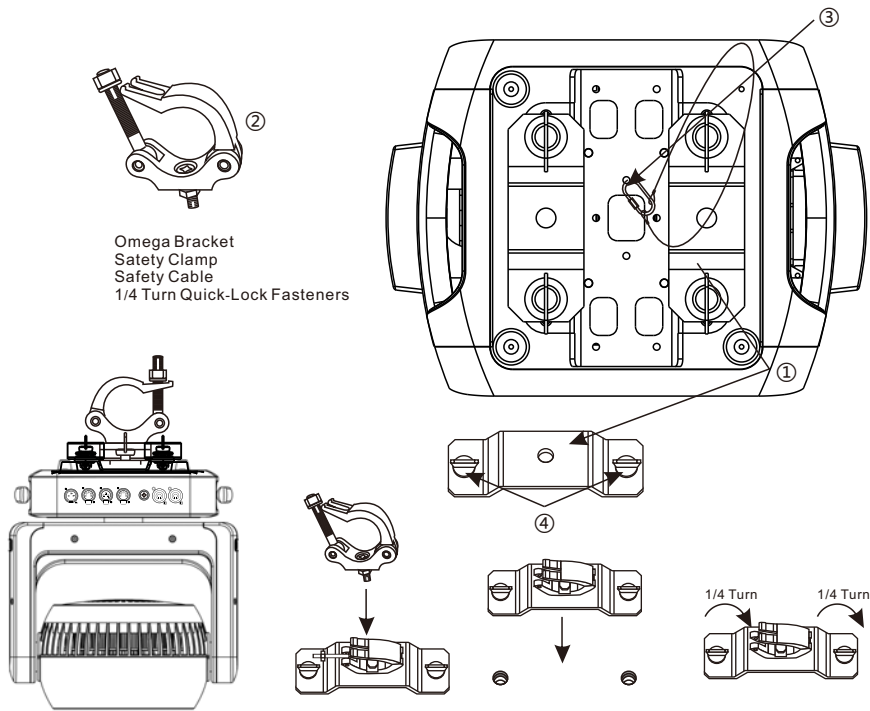
	190-204	Strobe 8: random burst pulse, fast slow
	205-209	Open
	210-224	Strobe 9: sine wave, fast slow
	225-229	Open
	230-244	Strobe 10: burst, fast slow
	245-255	Open
10	000-255	RED 1
11	000-255	GREEN 1
12	000-255	BLUE 1
13	000-255	WHITE 1
14	000-255	COLOR 1
15	000-255	RED 2
16	000-255	GREEN 2
17	000-255	BLUE 2
18	000-255	WHITE 2
19	000-255	COLOR 2
20	000-255	RED 3
21	000-255	GREEN 3
22	000-255	BLUE 3
23	000-255	WHITE 3
24	000-255	COLOR 3
25	092-099	RING MARCO
26	100-106	RING MARCO SPEED
27	107-113	COLOR TEMPERATURE
28	114-121	RED
29	122-128	GREEN
30	129-136	BLUE
31	137-143	WHITE
32	144-151	COLOR
33	152-158	COLOR CHANGE SPEED (OPEN 35-CH 020-029)
34	159-165	COLOR FADE SPEED (OPEN 35-CH 030-039)
35	000-009	COLOR MARCO
	010-019	Ring Control
	020-029	Overall Control
	030-039	Color Change
	040-255	Color Gradient Change
		Built-in programs
36	000-255	MARCO SPEED (OPEN 35-CH 040-255)

36 Channels Mode:

CHANNEL	VALUE	FUNCTION
1	000-255	PAN
2	000-255	PAN FINE
3	000-255	TILT
4	000-255	TILT FINE
5		PAN/TILT SPEED
	000-255	fast <input type="checkbox"/> slow
6		ZOOM
	000-255	wide <input type="checkbox"/> narrow
7		SPECIAL FUNCTIONS
	000-009	No function
	010-014	Reset
	015-255	No function
8		DIMMER
	000-255	0%~100%
9		SHUTTER
	000-019	Blackout
	020-024	Open
	025-064	Strobe 1: fast <input type="checkbox"/> slow
	065-069	Open
	070-084	Strobe 2: opening pulse, fast <input type="checkbox"/> slow
	085-089	Open
	090-104	Strobe 3: closing pulse, fast <input type="checkbox"/> slow
	105-109	Open
	110-124	Strobe 4: random strobe, fast <input type="checkbox"/> slow
	125-129	Open
	130-144	Strobe 5: random opening pulse, fast <input type="checkbox"/> slow
	145-149	Open
	150-164	Strobe 6: random closing pulse, fast <input type="checkbox"/> slow
	165-169	Open
	170-184	Strobe 7: burst pulse, fast <input type="checkbox"/> slow
	185-189	Open

## **4 OPERATION INSTRUCTIONS**

- The LEDZOOM 1925F is for beam effect for on-site decoration purpose.
- Don't turn on the fixture if it's been through severe temperature difference like after transportation because it might damage the light due to the environment changes. So make sure to operate the fixture until it is in normal temperature.
- This light should be keep away from strong shaking during any transportation or movement.
- Don't pull up the light by only the head, or it might cause damages to the mechanical parts.
- Don't expose the fixture in overheat, moisture or environment with too much dust when installing it. And don't lay any power cables on the floor. Or it might cause electronic shock to the people.
- Make sure the installation place is in good safety condition before installing the fixture.
- Make sure to put the safety chain and check whether the screws are screwed properly when installing the fixture.
- Make sure the lens are in good condition. It's recommended to replace the units if there are any damages or severe scratch.
- Make sure the fixture is operated by qualified personnel who knows the fixture before using.
- Keep the original packages if any second shipment is needed.
- Don't try to change the fixtures without any instruction by the manufacturer or the appointed repairing agencies.
- It is not in warranty range if there are any malfunctions from not following the user manual to operate or any illegal operation, like shock short circuit, electronic shock, lamp broke, etc.



	245-255	Open
10	000-255	RED (0% 100%)
11	000-255	GREEN (0% 100%)
12	000-255	BLUE(0%-100%)
13	000-255	WHITE(0%-100%)
14	000-255	COLOR
15	000-255	COLOR CHANGE SPEED (OPEN 17-CH 020-029)
16	000-255	COLOR FADE SPEED (OPEN 17-CH 030-039)
		COLOR MARCO
17	0-19	Overall Control
	20-29	Color Change
	30-39	Color Gradient Change
	40-255	Built-in programs
18	0-255	MARCO SPEED (OPEN 17-CH 040-255)
19	0-255	COLOR TEMPERATURE

## 9 DMX CHANNELS

### 19 Channels Mode:

CHANNEL	VALUE	FUNCTION
1	000-255	PAN
2	000-255	PAN FINE
3	000-255	TILT
4	000-255	TILT FINE
5		PAN/TILT SPEED
	000-255	fast slow
6		ZOOM
	000-255	wide narrow
7		SPECIAL FUNCTIONS
	000-009	No function
	010-014	Reset
	015-255	No function
8		DIMMER
	000-255	0%~100%
9		SHUTTER
	000-019	Blackout
	020-024	Open
	025-064	Strobe 1: fast slow
	065-069	Open
	070-084	Strobe 2: opening pulse, fast slow
	085-089	Open
	090-104	Strobe 3: closing pulse, fast slow
	105-109	Open
	110-124	Strobe 4: random strobe, fast slow
	125-129	Open
	130-144	Strobe 5: random opening pulse, fast slow
	145-149	Open
	150-164	Strobe 6: random closing pulse, fast slow
	165-169	Open
	170-184	Strobe 7: burst pulse, fast slow
	185-189	Open
	190-204	Strobe 8: random burst pulse, fast slow
	205-209	Open
	210-224	Strobe 9: sine wave, fast slow
	225-229	Open
	230-244	Strobe 10: burst, fast slow

## 5 INSTALLATIONS

**Cautions:** For added protection mount the fixtures in areas outside walking paths, seating areas, or in areas where the fixture might be reached by unauthorized personnel.

Before mounting the fixture to any surface, make sure that the installation area can hold a minimum point load of 10 times the device's weight.

Fixture installation must always be secured with a secondary safety attachment, such as an appropriate safety cable.

Never stand directly below the device when mounting, removing, or servicing the fixture.

from a ceiling, or set on a flat level surface (see illustration below). Be sure this fixture is kept at least 16m (1.5 ft) away from any flammable materials (decoration etc.).

Always use and install the supplied safety cable as a safety measure to prevent accidental damage and/or injury in the event the clamp fails.

**Mounting points:** Overhead mounting requires extensive experience, including amongst others calculating working load limits, a fine knowledge of the installation material being used, and periodic safety inspection of all installation material and the fixture. If you lack these qualifications, do not attempt the installation yourself. Improper installation can result in bodily injury.

Be sure to complete all rigging and installation procedures before connecting the main power cord to the appropriate wall outlet.

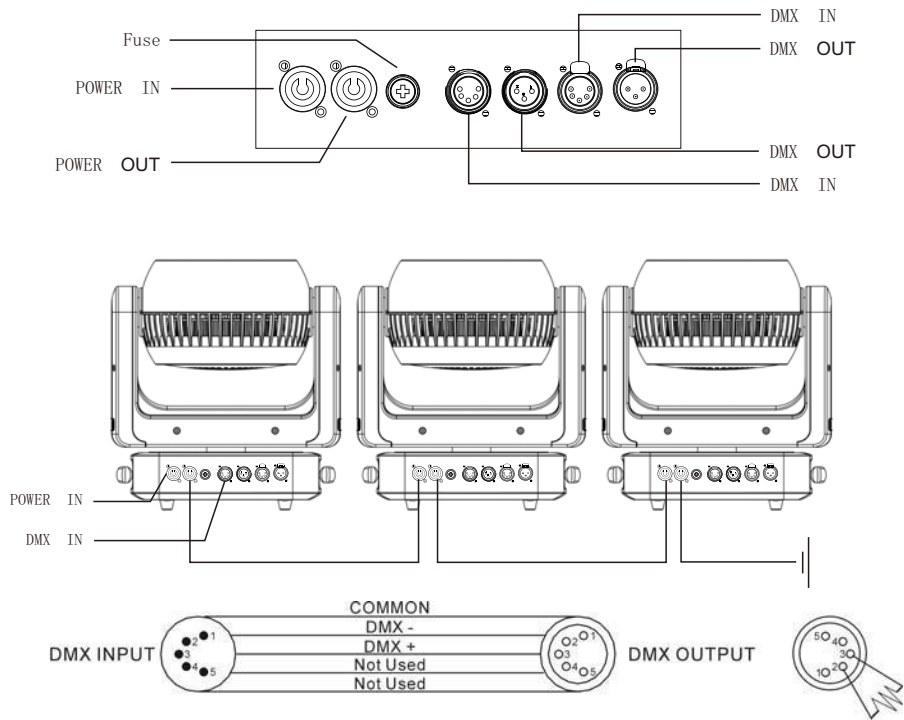
**Clamp Mounting:** The LEDZOOM 1925F provides two unique mounting bracket assembly that integrates the bottom of the base, the included "Omega Bracket," and the safety cable rigging point in one unit (see the illustration below). When mounting this fixture to truss be sure to secure an appropriately rated clamp to the included omega bracket using a M10 screw fitted through the center hole of the "omega bracket". As an added safety measure be sure to attached at least one properly rated safety cable to the fixture using on of the safety cable rigging point integrated in the base assembly.

Regardless of the rigging option you choose for your LEDZOOM 1925F, always be sure to secure your fixture with a safety cable. The fixture provides a built-in rigging point for a safety cable on the hanging bracket as illustrated above. Be sure to only use the designated rigging point for the safety cable and never secure a safety cable to a carrying handle.

# 7 DMX-512 CONTROL CONNECTIONS

Connect the provided XLR cable to the female 3-pin XLR output of your controller and the other side to the male 3-pin XLR input of the moving head. You can chain multiple Moving head together through serial linking. The cable needed should be two core, screened cable with XLR input and output connectors. Please refer to the diagram below.

DMX-512 connection with DMX terminator



1. If you using a controller with 5 pins DMX output, you need to use a 5 to 3 pin adapter-cable.
2. The last units DMX cable has to be terminated with a 120 ohm 1/4W resistor between pin 2(DMX-) and pin 3(DMX+) of a 3-pin XLR-plug and plug it in the DMX-output of the last unit.
3. Connect the unit together in a `daisy chain` by XLR plug from the output of the unit to the input of the next unit. The cable can not branched or split to a `Y` cable. DMX 512 is a very high-speed signal. Inadequate or damaged cables, soldered joints or corroded connectors can

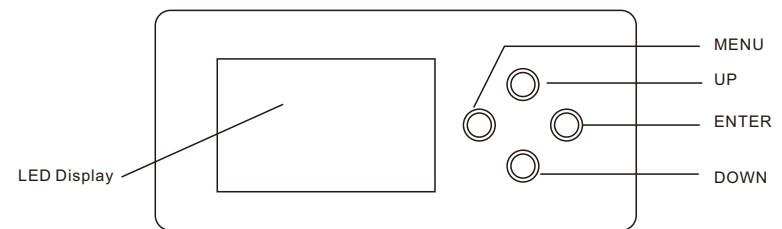
easily distort the signal and shut down the system.

4. The DMX output and input connectors are pass-through to maintain the DMX circuit, when one of the units' power is disconnected.
5. Each fixture unit needs to have an address set to receive the data sent by the controller. The address number is between 0-511 (usually 0 & 1 are equal to 1).
6. The end of the DMX 512 system should be terminated to reduce signal errors.
7. 3 pin XLR connectors are more popular than 5 pin XLR.
  - 3 pin XLR: Pin 1: GND, Pin 2: Negative signal (-), Pin 3: Positive signal (+)
  - 5 pin XLR: Pin 1: GND, Pin 2: Negative signal (-), Pin 3: Positive signal (+), Pin 4/Pin 5: Not used.

## 4.2 Address Setting

If you use a universal DMX controller to control the units, you have to set DMX address from 1 to 512 so that the units can receive DMX signal.

Press the **MENU** button to enter menu mode, select **DMX Functions**, press the **ENTER** button to confirm, use the **UP/DOWN** button to select **DMX Address**, press the **ENTER** button to confirm, the present address will blink on the display, use the **UP/DOWN** button to adjust the address from 001 to 512, and press the **ENTER** button to store. Press the **MENU** button back to the last menu or let the unit idle 7 seconds to exit menu mode.





DMX	ON	DMX input present
-----	----	-------------------

### 3. Button:

<b>MENU</b>	To select the programming functions
<b>▼ DOWN</b>	To go backward in the selected functions
<b>▲ UP</b>	To go forward in the selected functions
<b>ENTER</b>	To confirm the selected functions

### 4. DMX IN:

DMX512 link, use 3/5-pin XLR cable to link the unit and the DMX controller

### 5. DMX OUT:

DMX512 link, use 3/5-pin XLR cable to link the next unit and output DMX signal

### 6. MAINS IN:

PowerCon connection from main power supply

### 7. MAINS OUT:

PowerCon loop connection for main power supply to the next unit

### 8. Fuse (T 10A):

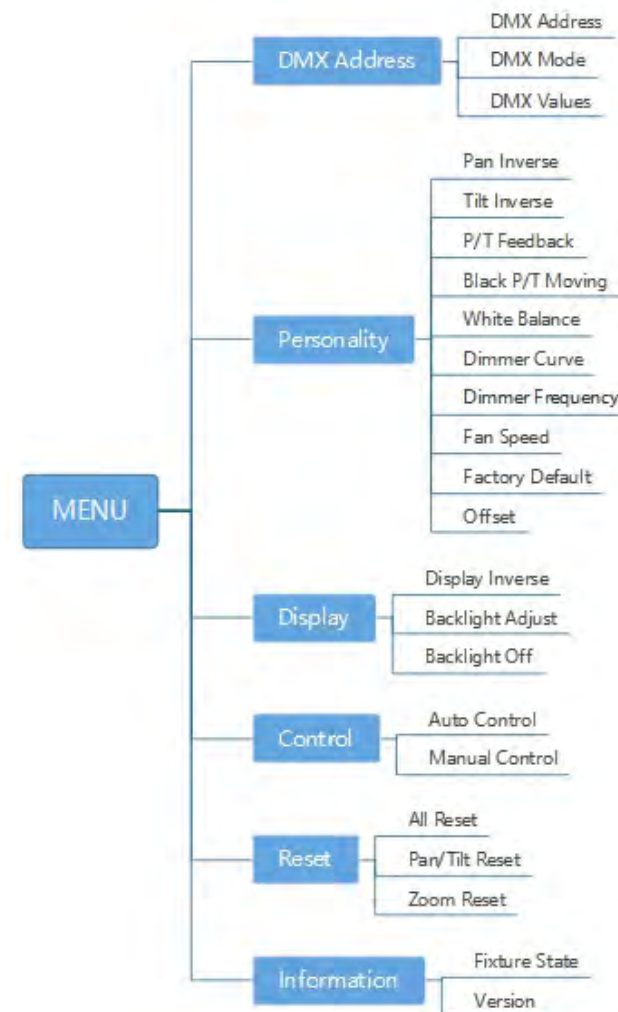
Protects the unit from over-voltage or short circuit

## 3.2 Main Function

To select any of the given functions, press the **MENU** button until the required function is showing on the display. Select the function by pressing the **ENTER** button and the display will blink. Use the **DOWN/UP** buttons to change the mode. Once the required mode has been selected, press the **ENTER** button to setup, to go back to the functions without any change press the **MENU** button again. Press and hold the **MENU** button for about one second or wait for one minute to exit the menu mode.

The main functions are shown overleaf:

## 8 MENU OPERATIONS



### **P/T Feedback**

To select **P/T Feedback**, press the **ENTER** button to show the **PAN/TILT FEEDBACK** on the display. Use the **UP/DOWN** button to select **No** (Pan or tilt's position will not feedback while out of step) or **Yes** (Feedback while pan/tilt out of step), press the **ENTER** button to setup. Press the **MENU** button back to the last menu or let the unit idle one minute to exit menu mode.

### **BL.O. P/T Moving**

To select **BL.O. P/T Moving**, press the **ENTER** button to show the **BLACKOUT WHILE PAN/TILT MOVING** on the display, use the **UP/DOWN** button to select **No** (normal while pan/tilt moving) or **Yes** (blackout while pan/tilt moving), press the **ENTER** button to setup. Press the **MENU** button back to the last menu or let the unit idle one minute to exit menu mode.

### **White Balance**

To select **White Balance**, press the **ENTER** button to show the **WHITE BALANCE** on the display, use the **UP/DOWN** button to select **Red**, **Green** or **Blue**. Once selected, press the **ENTER** button to confirm, and use the **UP/DOWN** button to adjust the value from **125** to **255**, press the **ENTER** button to setup. Press the **MENU** button back to the last menu or let the unit idle one minute to exit menu mode.

### **Cooling Mode**

To select **Cooling Mode**, press the **ENTER** button to show the **COOLING MODE** on the display. Use the **UP/DOWN** button to select **Auto** (Normal) or **Low** (Low speed). Once selected, press the **ENTER** button to setup. Press the **MENU** button back to the last menu or let the unit idle one minute to exit menu mode.

### **Dimmer Curve**

To select **Dimmer Curve**, press the **ENTER** button to show the **DIMMER CURVE** on the display, use the **UP/DOWN** button to select **Linear**, **Square Law**, **Inverse Squ.** or **S-curve**. Once selected, press the **ENTER** button to store. Press the **MENU** button back to the last menu or let the unit idle one minute to exit menu mode.

### **DMX Functions**

Enter MENU mode, select **DMX Functions**, press the **ENTER** button to confirm, use the **UP/DOWN** button to select **DMX Address**, **DMX Channel Mode** or **View DMX Value**.

#### **DMX Address**

To select **DMX Address**, press the **ENTER** button to show the **DMX ADDRESS** on the display. Use the **UP/DOWN** button to adjust the address from **001** to **512**, press the **ENTER** button to setup. Press the **MENU** button back to the last menu or let the unit idle one minute to exit menu mode.

#### **DMX Channel Mode**

To select **DMX Channel Mode**, press the **ENTER** button to show the **DMX CHANNEL MODE** on the display. Use the **UP/DOWN** button to select **Mode1 (14)** or **Mode2 (26)**, and press the **ENTER** button to setup. Press the **MENU** button back to the last menu or let the unit idle one minute to exit menu mode.

#### **View DMX Value**

To select **View DMX Value**, press the **ENTER** button to show the **VIEW DMX VALUE** on the display. Use the **UP/DOWN** button to view the DMX channel values. Press the **MENU** button back to the last menu or let the unit idle one minute to exit menu mode.

### **Fixture Setting**

Enter MENU mode, select **Fixture Setting**, press the **ENTER** button to confirm, use the **UP/DOWN** button to select **Pan Inverse**, **Tile Inverse**, **P/T Feedback**, **BL.O. P/T Moving**, **White Balance**, **Cooling Mode**, **Dimmer Curve** or **Dimmer Speed**.

#### **Pan Inverse**

To select **Pan Inverse**, press the **ENTER** button to show the **PAN INVERSE** on the display. Use the **UP/DOWN** button to select **No** (normal) or **Yes** (pan inverse), press the **ENTER** button to setup. Press the **MENU** button back to the last menu or let the unit idle one minute to exit menu mode.

#### **Tilt Inverse**

To select **Tilt Inverse**, press the **ENTER** button to show the **TILT INVERSE** on the display. Use the **UP/DOWN** button to select **No** (normal) or **Yes** (tilt inverse), press the **ENTER** button to setup. Press the **MENU** button back to the last menu or let the unit idle one minute to exit menu mode.